



Speech Pathologist

[Speech To You](#)

Mobile / Community / Clinic / Telehealth / Work From Home

[Service Locations](#)

\$65 – \$75 per hour

Experience the Speech To You difference – Flexible, Supportive, and Rewarding

🧊 We're growing and looking for a passionate Speech Pathologist to join our team!

Do you want:

- No billable targets?
- Flexible working hours?
- Ample support?
- Competitive rates?

We thought so!

Speech To You Speech Pathologist Testimonial:

- *"Working at Speech To You has been such a rewarding experience. The team provides exceptional support and supervision, promotes a healthy work-life balance, and I feel privileged to collaborate with such a passionate and highly experienced group of speech pathologists".*

- Speech To You New Graduate Speech Pathologist, Sarah Fahey.

About Us:

- Speech To You provides community, clinic and telehealth speech pathology services to adults with disabilities funded by the NDIS. Our team consists of 7 Speech Pathologists and 1 Business Development Manager. We are also strongly affiliated with 'The Real Eat' Dietitian's and 'Occupational Therapy At Home' Occupational Therapists. We support a wide range of conditions including acquired (stroke, MND, PD) and developmental (ASD, cerebral palsy) conditions.

About You:

- **Passionate communicator** – dedicated to helping clients achieve their communication and swallowing goals.
- **People-focused** – build strong, trusting relationships with clients, families, and colleagues.
- **Proactive and motivated** – always eager to learn, grow, and take initiative.
- **Organised multitasker** – excellent time management, navigation, and organisational skills to handle a varied caseload.
- **Confident communicator** – clear and professional in both written reports and client interactions.
- **Evidence-based** – committed to using best practices and ongoing professional development.
- **Collaborative yet independent** – comfortable working autonomously and as part of a multidisciplinary team.
- **Compassionate and client-centred** – focused on individual needs and holistic care.
- **Tech-savvy** – confident using digital tools for documentation and telehealth.

Orientation & Perks:

- **\$500 – Annual Professional Development Budget** – yes way
- **5x Paid Shadow Sessions per Year** – choose from Speech Pathology, OT, or Dietetics
- **2x Paid MDT ‘Lunch & Learns’ per Year** – with Speech Pathology, OT, or Dietetics
- **1:1 Shadowing** – with a senior Speech Pathologist during orientation + ongoing ad-hoc
- **Weekly Supervision & Mentoring** – with an experienced senior clinician
- **“Case Collab” Weekly Meetings** – team discussions on clinical cases
- **Pay Increases** – based on experience and performance
- **Team Multidisciplinary WhatsApp Group** – instant access to SP, OT and DT support
- **Extensive Shared Drive** – with assessments, templates, and therapy resources
- **Your Own Clinical Toolkit & Dysphagia Toolkit** – ready from day one

A Typical Day:

- Provide therapy and assessments from home, the office, online, or in the community
- Deliver evidence-based interventions and complete comprehensive assessments and reports
- Support NDIS participants in achieving their communication and swallowing goals
- Attend videofluoroscopic swallow studies (VFSS) with a qualified clinician, as required
- Develop and implement tailored resources, including AAC (Augmentative and Alternative Communication)
- Collaborate with the multidisciplinary team to ensure holistic client care
- Regular mentoring, clinical supervision, and debriefing to support professional growth

Location:

- Work from home
- Work from our clinic's: [Waterman shared office spaces](#)
- View our service locations: <https://www.speechtoyou.com.au/services>

Requirements:

- Degree in Speech Pathology
- Valid driver's license and personal vehicle
- Access to computer and phone

Contractor Rates:

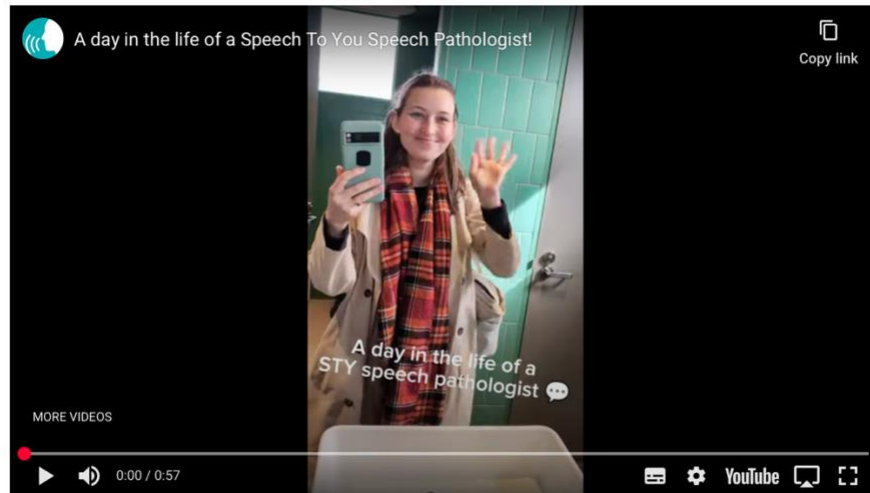
- **New Graduate (<12 months):** \$65/hour + 12.0% super = \$87,360
- **Grade 1 (1+ year):** \$70/hour + 12.0% super = \$94,080
- **Grade 2 (2+ years):** \$75/hour + 12.0% super = \$100,800

Why Contractor?

- Manage your own caseload
- Set your own hours
- Higher pay rate with no billable targets
- Control over taxes and expenses

Why Not Employee?

- High caseload and burnout risk
- Set required hours and limited flexibility
- Lower pay with fewer benefits



[Watch a Day In The Life of a Speech To You Speech Pathologist](#)



Ready to Apply and Join The Speech To You Crew!?

- Please send your cover letter and resume to admin@speechtoyou.com.au
- Please provide 1-2x reference contact/s

We look forward to hearing from you!

ELLY BRYCESON

Director / Speech Pathologist

SPEECH TO YOU

M. 0402 532 146

E. admin@speechtoyou.com.au

W. www.speechtoyou.com.au

@ [Instagram](#), [Facebook](#), [Linked In](#)

SPEECH TO YOU

M. 0402 532 146 **E.** admin@speechtoyou.com.au **W.** www.speechtoyou.com.au